



## Installing iQsystem 6.0

CD INSTALLATION

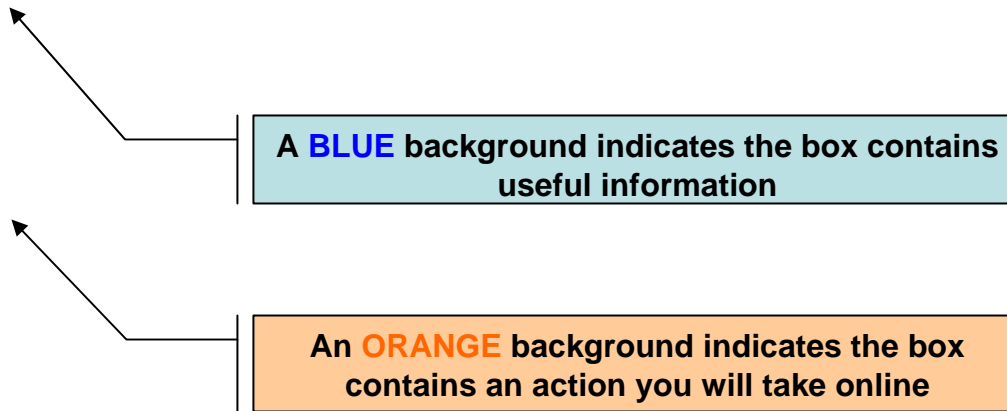


Certiport provides industry-leading training, assessment and certification solutions that enable individuals to develop the skills necessary to achieve more, distinguish themselves and advance in today's academic and business environments. These solutions include the Certiport Internet and Computing Core Certification (IC<sup>3</sup>®), the Microsoft Office Specialist Certification Program and Microsoft IT Academy delivered through a channel of more than 9,000 Certiport Centers worldwide.

This module outlines the steps necessary for installing iQsystem 6.0. This demonstration will help ensure the iQsystem is properly installed and ready to use which will improve the testing experience for candidates.



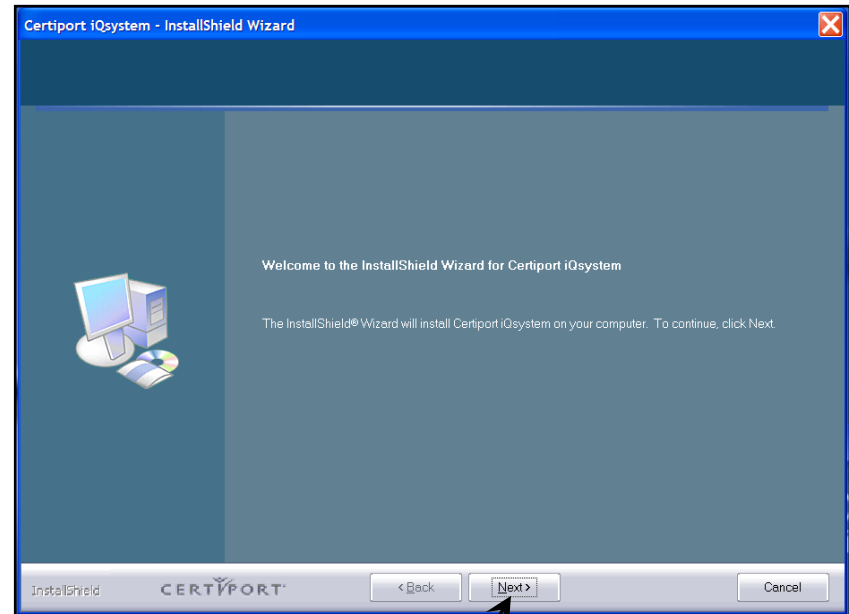
<b>Page 5</b>	<b>iQsystem Tools access</b>
<b>Page 6</b>	<b>Administrator Login</b>
<b>Page 7</b>	<b>Administrative Menu</b>
<b>Page 8</b>	<b>Check Available Inventory</b>
<b>Page 9</b>	<b>Manage System Software</b>
<b>Page 10</b>	<b>Configuration Test</b>





- Start the install process by inserting the iQsystem 6.0 CD into the CD drive on your computer.
- The CD's auto run feature will start and bring you to the Install screen pictured on the right. Click on the Next button to start.

**NOTE:** *If the auto run features doesn't start the CD, double click on the My Computer icon on your desktop, then double click on the CD drive (under Type), which will bring you the install screen pictured on the right.*

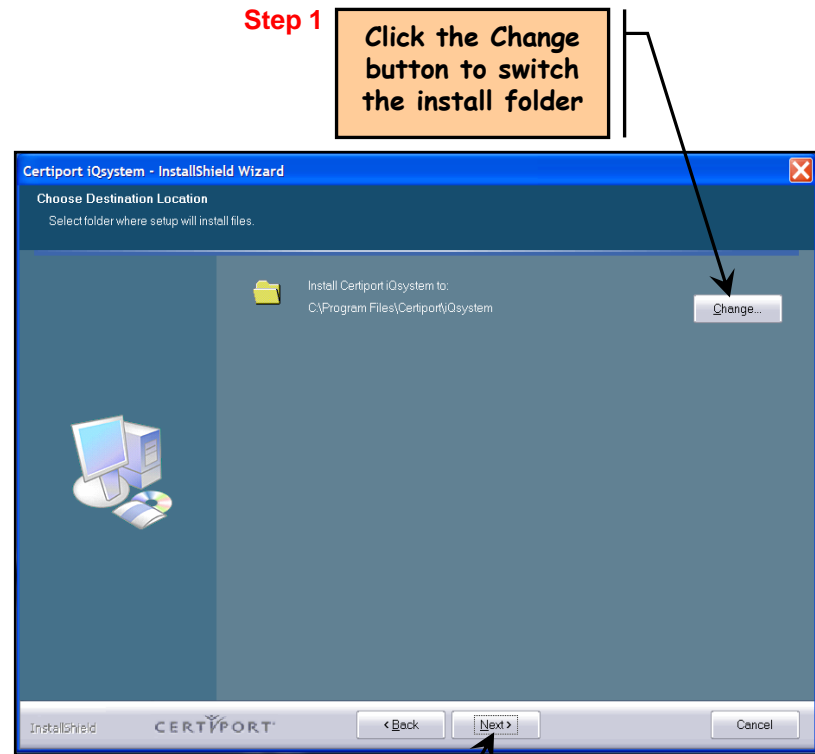


Click on Next to start installing

# Install Folder



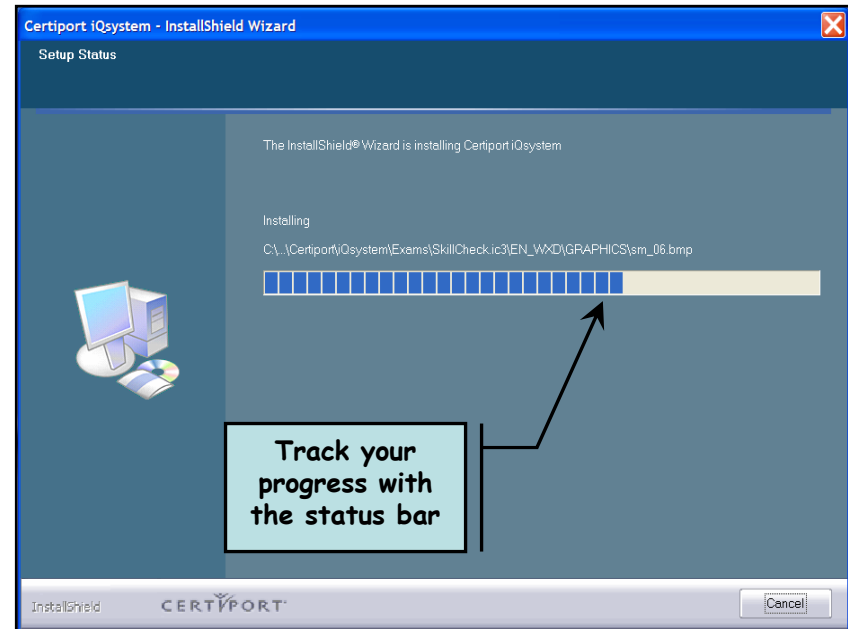
- Select the default folder or click on the Change button and select the folder you wish to install the files to.
- When the install folder is correct, click Next to continue installing the iQsystem.



**Step 2**  
Click Next to continue



- The status bar will demonstrate the current progress of the installation.
- This process will take anywhere from 4-8 minutes.





- This window identifies that the exam engines are being installed.

**NOTE:** *This installs the Microsoft exam, IC3 exams, and their engines.*



Installing the Microsoft Office Specialist Exam Engine



# Install Complete



- When the installation is complete you will be prompted to restart your system. To allow the system files to be fully configured, it is recommended you restart at this time.
- Select the option you want to perform and click Finish

**Step 1** Select Yes to restart the computer

**Step 2** Click Finish to complete the install process

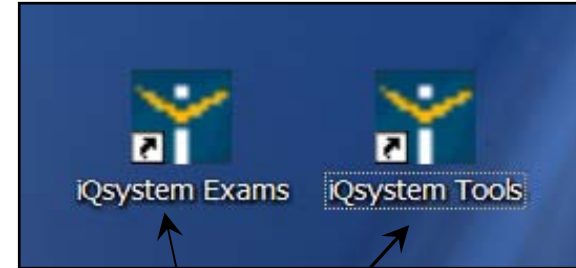
If you select No you will need to restart the computer later

# iQsystem 6.0 Desktop Icons



- After you restart your computer the iQsystem icons will be on your desktop.
- Double click on the icon you wish to open.

**NOTE:** You can also get to the iQsystem shortcuts by clicking on the Start button, All Program Certiport and iQsystem.



iQsystem icons



## ***Certiport Customer Support Phone Numbers:***

- Certiport Customer Services & Support:  
1-888-999-9830, (801) 847-3100
- Microsoft Office Specialist:  
1-888-222-7890, (801) 443-3150 (Int.)
- Internet and Computing Core Certification (IC<sup>3</sup>):  
1-800-572-9250, (801) 443-3152 (Int.)

## ***Certiport eSupport Portal:***

- [www.certiport.com](http://www.certiport.com), click on Support in the upper right hand corner.
- Click on link for eSupport

Click here to connect to eSupport

e . . . . .